

LOWER EAST
apartment series

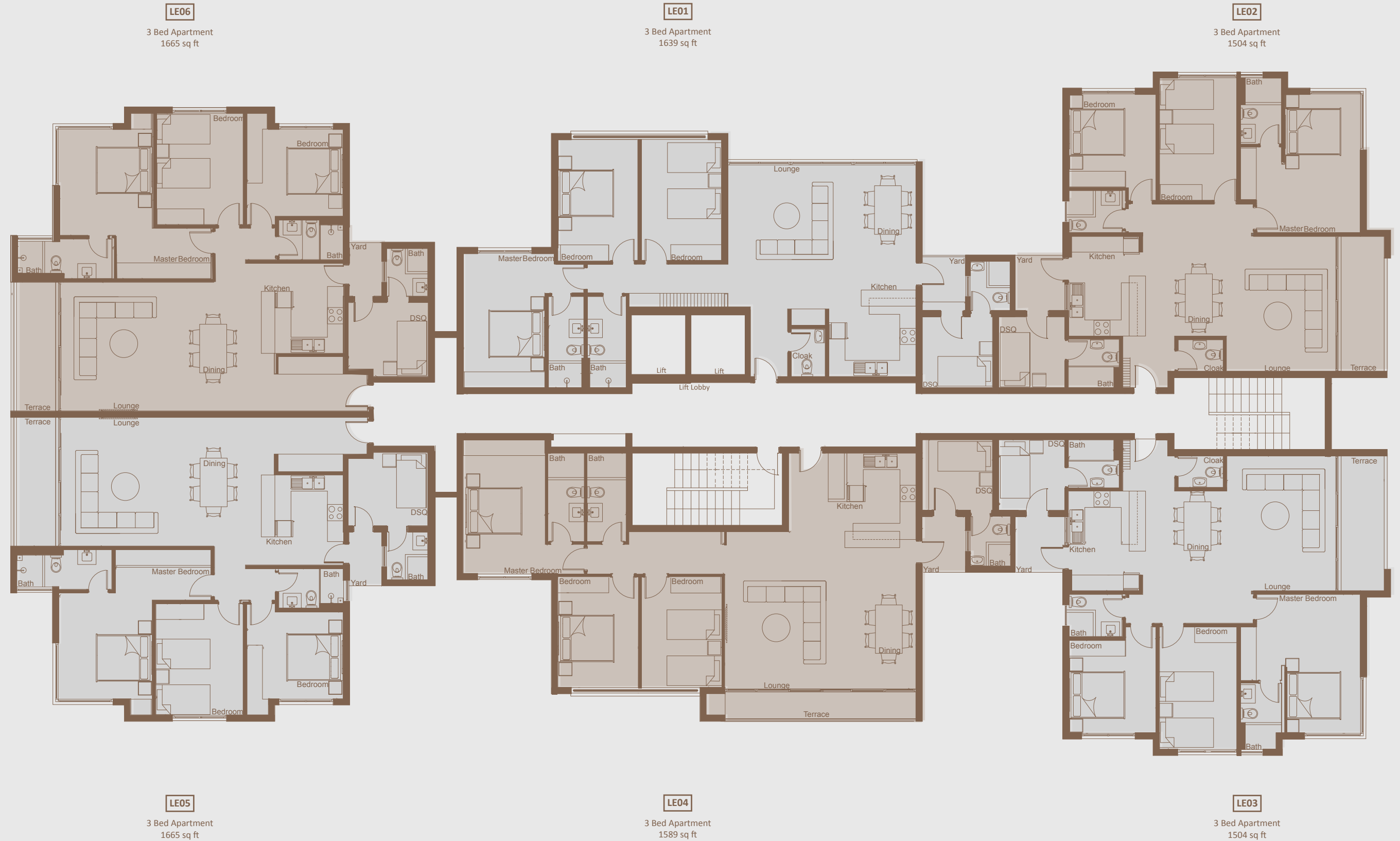
RIVERSIDE
square

FINISHES

Flooring	Wood-effect ceramic floor tiles with MDF painted skirting
Windows	Powder-coated aluminium frame with 6mm glass
Walls	Plaster and paint to living areas Selective ceramic tiling to wet areas
Curtain Boxes	MDF pelmets, painted finish with PVC concealed rails
Doors	Veneer-faced MDF doors to living areas
Ceiling	Painted to underside of slab
Kitchen	MDF cabinetry with stainless steel handles Stone worktops Stainless steel sink
Appliances	Built-in hob, oven and extractor hood
Wardrobes	Full-height MDF cabinetry
Balcony Balustrades	Glass panels with stainless steel handrails
Bathroom fixtures	White wall-hung WC with concealed cistern Vanity unit with integrated acrylic sink Wall-mounted mirror Overhead shower (additional wall-mounted hand shower to master bathroom) 10mm toughened glass shower screens Towel rails, toilet roll holder and shower shelf
Electrical Fittings	Hager or equivalent, bronze fittings

UTILITIES

Mains power	KPLC supply
Back-up power	Generator for common areas and apartments
Water supply	Mains water and borehole
Water heating	Electrical heaters, Solar water heating
Security	Intercom, CCTV surveillance, access control



TEAM

Developers

One Zero Seven Riverside Drive Ltd

Development Consultants

HassConsult Ltd

Architect

Abdi Ismail

Project Manager

Designworks Ltd

Structural & Services Engineers

Structec Engineering Consultancy

Quantity Surveyors

Designworks Ltd

Legal Advisory

Abib & Associates Advocates